



Creating a Greeniverse



ULTRA-TECH

Environmental Consultancy & Laboratory

Laboratory Approved & Gazetted by
Ministry of Environment and Forests (MoEF),
Govt. of India and NABL Certified

NABET
Accredited
Sectors



In the Search of Environment



Our Chairman

The significance of Environment has long been recognised by the Indian Culture. Bhagwad-Geeta gives clear hypothesis connecting the activities of human beings.

अन्नाद् भवति भूतानि, पर्जन्यादन्नसंभवः ।
यज्ञाद् भवति पर्जन्या, यज्ञ कर्मसमुद्भवः ॥

Human activity can be a religious activity provided it is based on sacrifice and not unlimited consumerism. Man must recognise the gift of nature and as an acknowledgment recycle whatever is given to him by the nature, back to the divine source, The God, or may be called as Nature. The meaning of above said 'shloka' is human activities should lead to more rains, more rains will create more food and more food will support the creation of The God i.e. the Environment.

All the forms of pollution are connected with 'Tritatva' i.e. Water, Earth and Air. But the word environment should not be restricted to physical, chemical or biological sense, but reflects the working of human mind. The Environment has eight facts.

भूमिरापोऽ नलो वायुः खं मनो बुद्धिरेव च ।
अहंकार इतीयं मे भिन्नाप्रकृतिरष्टधा ॥

A self-disciplined human activity alone will lead to the environmental protection and as a natural corollary selfish exploitation of nature will lead to destruction.



Our Managing Director

Every human activity causes small or big impact on environment setting of this world and it first happened when man dug a hole on the earth for even tree plantation. The nature rectifies such damages of its own in due course of time. But in last hundred years due to rapid industrialization and urbanization, these activities has increased many-folds and these damages cannot be digested or rectified by the nature itself, so the SOS has been finally sent by the nature.

WE ARE LIKE A TINY SHIP IN THE OCEAN OF UNIVERSE;
SUPPLIED WITH LIMITED WATER, FOOD AND AIR.
WE MUST PRESERVE IT.
NOBODY WILL COME TO OUR HELP.

Instead of calling it as commitment we must understand that we have no option left for saving environment. Challenges of next 50 years for mankind will be of environment and energy. Before it is too late, let us start acting on it.

SHEKHAR TAMHANE
(Managing Director)



ENVIRONMENTAL CONSULTANCY & LABORATORY

206, 224-225, Jai Commercial Complex, Eastern Express Highway, Opp. Cadbury, Khopat, Thane West – 400601
Tel: +91-22-25342776, 25380198 Fax: +91-22-25429650 E-mail: sales@ultratech.in Web: www.ultratech.in

INTRODUCTION LETTER

Dear Sir / Madam,

We would like to introduce our organization - ULTRA-TECH Environmental Consultancy & Laboratory and request to provide us an opportunity to serve you with our quality environmental services.

ULTRA-TECH is a dynamic environmental consulting and laboratory services providing organization, since its inception in 1986. It is a confluence of well qualified and experienced engineers, environmental experts, management professionals, project management experts, well trained O & M, sampling and lab analytical teams etc.

ULTRA-TECH's environmental experts are approved by NABET for various functional areas like air pollution control and monitoring, water pollution control and monitoring, ecology and bio-diversity, socio-economy, solid and hazardous waste management, land use applications, hydrology, geology, noise and vibration, risk analysis and hazardous waste management, air quality and soil conservation and also as EIA coordinators for various project sectors like building construction, townships, sugar, distilleries, synthetic chemicals, river valley, thermal power, mineral beneficiation and metallurgical industries etc.

ULTRA-TECH is having following certifications and accreditations.

- ☑ The company is ISO 9001:2008 certified
- ☑ Its' EIA organization is accredited by QCI-NABET for various project sectors
- ☑ Its' Environmental Laboratory is MoEF approved and OHSAS 18001:2007 certified
- ☑ Its' Environmental Laboratory is NABL Certified for parameters of various environmental media like air, water, waste water etc.
- ☑ The company's environmental experts are approved by QCI-NABET as EIA Coordinators for various project sectors and functional areas.

ULTRA-TECH's core functional services include

- ☑ Environmental Clearance Services,
- ☑ Environmental Laboratory Services,
- ☑ ETP-STP Turnkey Project Engineering and Consultancy Services and
- ☑ Environmental Due Diligence Services.

ULTRA-TECH has following credentials:

- ☑ State of Art Environmental Laboratory & Trained Manpower, Gazetted by MoEF.
- ☑ Environmental Advisor for Municipal Corporation.
- ☑ Affiliated to Indian Green Building Council (IGBC), Hyderabad.
- ☑ Affiliated to United States Green Building Council (USGBC), US.
- ☑ Environmental Consultants for Federation of All India Textile Manufacturing Association (FAITMA)
- ☑ Environmental Consultants for All India Lead Manufacturing Association.
- ☑ NABET, Quality Council of India, Accreditation for its EIA organization.
- ☑ ISO 9001:2008, Quality Management System implemented
- ☑ Association with leading clients for providing environmental services
- ☑ Brand Loyalty for its environmental clearance services

ULTRA-TECH is honored by the following firms for its unflagging quality environmental services:

- ☑ TECHNICAL CONSULTANT OF CRISIL, MUMBAI, For Common Effluent Treatment Plant issues in Gujarat, India
- ☑ TECHNICAL CONSULTANT OF FAITMA, MUMBAI, Fed. of All India Textile Manufacturer's Associations] For Environmental issues
- ☑ TECHNICAL CONSULTANCY SERVICE, PUNE, For Environmental Quality Monitoring Services at Panvel-Karjat Railway Project
- ☑ RASTRIYA CHEMICALS & FERTILIZERS, MUMBAI, For Ambient Air Monitoring in nearby villages

ULTRA-TECH has strength of committed 250 professionals in various functional services & is planning to increase its strength in near future.

ULTRA-TECH has its branches in Pune, Kochi, Bangalore, Kolkata & Singapore & planning its presence in various states with enhancing its serving capacity

ULTRA-TECH has premier organizations on its cliental list and has been continually upgrading its service quality so as to attain maximum customer satisfaction.

With this, we request you to leave your all environmental problems to our experts and help us in building this universe into greeniverse.

PUNE BRANCH
Unit no. 201-204, Building C-3
Saudamini Commercial Complex,
Paud Road, Kothrud,
Pune – 411038.
Tel. No. : +91-20-25286106
E-mail : pune@ultratech.in

KOCHI BRANCH
27 / 2957 A1, First Floor,
Vaniampilly, K P Vallon Road,
Kadavanthra,
Kochi – 682020.
Tel. No. : +91(0) - 484 - 4011173
E-mail : kochi@ultratech.in

BANGALORE BRANCH
No.393, Judges Colony, Matadahalli Layout,
RT Nagar, Bangalore - 560032.
Tel. No. : +080-23333115
Mobile : 7829333115
E-mail : Bangalore@ultratech.in

KOLKATA BRANCH
CG – 229, Sector II, Salt Lake
Kolkata (West Bengal) – 700 091.
Tel. No. : +033-40089145
Mobile : +91 9674 488 198
E-mail : kolkata@ultratech.in

DELHI BRANCH:
Flat No. 6E, 6th Floor,
Gopala Towers, Rajendra Palace,
New Delhi - 110008.
E-mail: delhi@ultratech.in

ENVIRONMENTAL LABORATORY
Survey No. 93/A, Conformity
Hissa No. 2, G. V. Brothers
Building, Bata Compound, Khopat,
Thane (W) - 400 601, Maharashtra.
E-mail : lab@ultratech.in

SINGAPORE BRANCH
Ultra-Tech Bio-cons Pvt. Ltd. 10,
Jalan Beasar Road, # 11-05, Singapore - 208787.
Tel. No. : +65 - 67548189
E-mail : singapore@ultratech.in



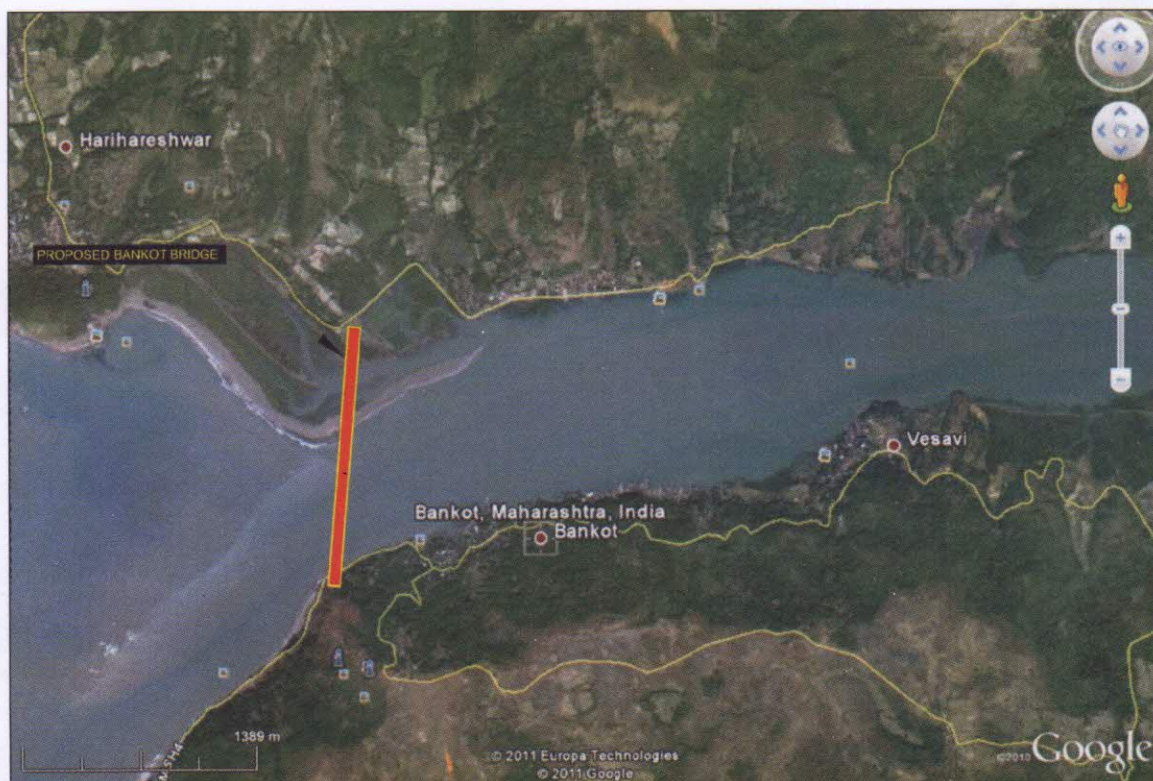
Environmental Clearance Services



**Project Consultancy & Turnkey Project Services
(ETP/STP/WTP)**



Environmental Laboratory Services



CRZ clearance for proposed bridge at Bankot Creek, Maharashtra.



STP-ETP-WTP Engineering & Turnkey Project Consultancy Services

Our Engineering and Turnkey Project Consultancy Services department is a confluence of chemical, environmental, civil, mechanical and electrical engineers, engineering design and development professionals, materials and business management experts and commissioning, operations and maintenance teams for providing required services for STP/ETP/WTP projects on turnkey basis.

ULTRA-TECH engineering and project management team has designed and commissioned number of STP/ETP/WTP plants for various industrial, commercial, infrastructure, construction and corporate sectors and has been operating and maintaining number of these plants on annual contracts.

Our engineering and turnkey project consultancy services include:

PROJECT CONSULTANCY SERVICES

- ☒ Preparing Pre-feasibility Report and Treatability Research and Development studies
- ☒ Developing detailed designing and engineering services like P&I diagrams, plant layouts, structural drawings, piping drawings, listing and quantity requirement, machineries and accessories supply source identification and analysis etc.
- ☒ Preparing project planning, scheduling reports apart from operation and maintenance manuals
- ☒ Developing SOPs for plant trouble shooting guide

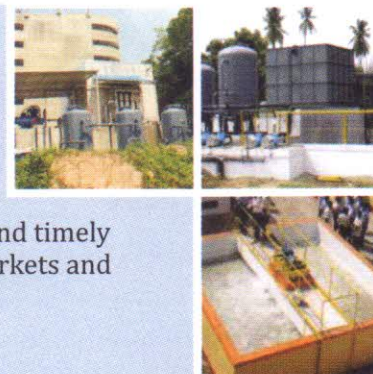
TURNKEY PROJECT SERVICES

- ☒ Preparation of techno-commercial feasibility reports for STP/ETP/CETP/WTP plants
- ☒ Designing and developing suitable treatment schemes with various optional systems like conventional, diffused aeration, MBBR, SAFF, MBR SBR, Ultra-filtration, Ultra-violet and RO plant systems



Our engineering and project management department

is well known for its quality, cost effective, well scheduled and timely services and has developed a niche in its prime regional markets and at present enjoying its position through attaining optimum customer satisfaction.



OPERATION & MAINTENANCE OF STP/ETP/CETP/WTP

ULTRA-TECH has a well trained, experienced and skilled operation and maintenance team for providing operation and maintenance services for STP/ETP/CETP/WTP plants on annual contract basis.

- ☒ For all STP/ETP/CETP/WTP plants designed & developed by us for agreed mandatory period
- ☒ For all plants on AOMC basis

SUPPLY OF SPARES & CONSUMABLES

- ☒ Wesource and supply quality spares, accessories and consumables through our registered and well trusted vendors developed by our project management team via vendor analysis.

MANUFACTURING

- ☒ We are having our own associated manufacturing and fabrication units for making following products, machineries and instruments.

Package waste water treatment plant	: 5 KL - 200 KL
Agitator	: 0.5 HP - 50 HP
Activated Carbon Filter	: 0.2 M - 6 M Dia
Pressure Sand Filter	: 0.2 M - 6 M Dia
Softener	: 0.2 M - 6 M Dia
Clariflocculator	: 0.5 HP - 10 HP
Clarifier mechanism	: 2.5 M - 30 M

ULTRA-TECH - Environmental Consultancy & Laboratory

Head Office : 206, 224-225, Jai Commercial Complex, Eastern Express Highway, Opp. Cadbury, Khopat, Thane West - 400 601

Tel: +91-22-25342776, 25380198 Fax: +91-22-25429650 e-mail: sales@ultratech.in

Visit Us At: www.ultratech.in Business Development : 09323544144

PUNE : pune@ultratech.in

Tel. No. : +91-20-2538 01 93 / 94

BANGALORE : bangalore@ultratech.in

Tel. No. : +080-23333115

KOCHI : kochi@ultratech.in

Tel. No. : +91-484 -2114252

KOLKATA : kolkata@ultratech.in

Tel. No. : +033-40089145

SINGAPORE : singapore@ultratech.in

Tel. No. : +65 - 67548189

DELHI : delhi@ultratech.in

Our Key Clients - PROJECTS

CLIENTS	TYPE OF PROJECT / LOCATION
M/S. Rustomjee	Residential, Global city, Virar Residential, Atelier, Thane Residential, Meridian, Charkop Residential, TMC, Thane Residential, Astrea, Thane Residential, Seasons, Bandra
M/S. Rajesh Estates & Nirman Ltd.	Hotel, Radisson Plaza, Kanjurmarg Residential, Raj Grandeur STP, Powai Radisson Plaza Hotel WTP, Kanjurmarg Residential, Raj Grandeur WTP, Powai
Adani Estate & Pvt. Ltd.	Commercial, STP at Commercial Complex, BKC Residential, WTP - I at Adani western heights, Andheri Residential, WTP - II at Adani western heights, Andheri
M/S. Asia Motor Works	Automobile Unit, Bhuj
M/S. Plantation Corporation of Kerala Ltd.	Latex, Kerala Kottayam, Kerala
M/S. Nisarg Nirman Developers	Hyde Park, Kharghar
M/S. Lokhandwala Infrastructure	City Park Victoria
M/S. Avighna India Ltd, Lower Parel	Residence Project
L & T Realty, Powai	Commercial Complex Commercial, L & T TC II WTP
M/S. Kasata Home Tech	Kalp City, Badlapur
M/S. Shimoga Co-op Milk Producer's Societies Union Ltd.	Milk Industry
M/S. Shirt Company (India) Ltd.	Textile
M/S. Cipla Ltd., Goa	Pharmaceutical, Goa
M/S. Johnson & Johnson, Mulund	Pharmaceutical, Mulund
Infopark	IT Park, Kochi
M/S. Priyali Builders	Residential, Sion koliwada
M/S. Brizeal Realtor & Development Pvt. Ltd.	Residential, Kandivali
M/S. Atal Buildcon Pvt. Ltd.	Nashik
M/S. Prescon Realtors & Infrastructure Pvt. Ltd.	Prescon, Thane Prestige, Thane
M/S. Asian Color Coated Ispat Ltd.	Steel Industries, Khopoli
M/S. K. Mahadev & Co. Pvt. Ltd.	Residence Project, Bhandup
M/S. Viswaat Chemicals	Chemical Industries, Ambernath
M/S. Runwal Capita Land India Pvt. Ltd.	Residence Project, Ghatkopar
M/S. Essar Steel, Sanaswadi	Steel Industries, Pune
M/S. Charosa Wineries Ltd.	Wineries Industries, Nasik
M/s. Charosa Wineries Ltd., Nashik	Wineries Industries, Nasik
M/S. Marathon Reality Pvt. Ltd.	Commercial Office, Mulund
M/S. Kasegaon Education Society, STP	International School, BKC
M/S. Kasegaon Education Society, BKC WTP	International School, BKC
M/S. Mudra Lifestyle Ltd.	Textile Unit, Tarapur
M/S. Bio-Cons PTE Ltd.	Commercial Office, Vietnam
M/S. Goa Institute Of Management	Institute of Management, Goa
M/S. Gulraj Hotel	Hotel Industries, Mahape
M/S. V. R. Constructions Pvt. Ltd.	Bhoomi Ares, Thane
M/S. Suyog Happy Homes	Residence Project Bandra, Mumbai
M/S. Earnest Towers Pvt. Ltd.	Commercial Office, BKC, Mumbai
M/S. Laxmi Organic Industries Ltd.	Chemical Industries, Mahad
M/S. Puranik Builders Pvt. Ltd.	Residence Project, Thane
M/S. Wadhwa & Associates Realtors Pvt. Ltd.	Commercial Office, BKC
Serene Properties (K. Raheja), Building No. 7	IT Park, Airoli
Serene Properties (K. Raheja), Building No. 14	IT Park, Airoli



Environmental Laboratory Services

Our Environmental Laboratory - recognized by MoEF, Government of India and OHSAS 18001:2007 certified, is committed to provide world class Laboratory Services to our clients.

Our well equipped research and analytical laboratory in Thane plays a vital role in environmental monitoring and analyses of various environmental attributes like air, water, soil, wastewater, noise, stack, flora/fauna including Marine (Phyto and Zooplanktons, Benthic Micro and Macro invertebrates, Fish), microbiological, etc.

Laboratory Facilities

Our spacious laboratory facility situated in an industrial area at Thane has well demarcated separate lab facilities for water & wastewater testing, microbiological testing, soil testing and air quality testing for quality assurance and safety. Our lab is well equipped with modern equipments and instruments and some of our key analytical instruments and other facilities include:

- ☒ GC accompanied with FID, ECD detectors & methanizer
- ☒ AAS with Hydride Generator, Flame Photometer, Visible Spectrometer
- ☒ High Volume Samplers, Respirable Dust & Fine Dust Samplers
- ☒ Stack Monitoring Kits, Safetequipments, Mobile Van for sampling with well trained sampling team
- ☒ Orsat, Portable Gas Sampler, Mechanical Cup & Digital Anemometer
- ☒ Whether station to monitor meteorological data-wind speed, direction, temperature and relative humidity
- ☒ Effluent Treatment Plant for treating lab wash chemicals
- ☒ Well equipped and furnished conference room with projector
- ☒ Well qualified and experienced analytical teams
- ☒ NABET approved experts for water and air pollution control and soil conservation functional areas Laboratory Facilities



Laboratory: MoEF (Govt. of India) Recognised & Accredited by NABL-QCI, OHSAS 18001 : 2007 Certified

- Established In 1986
- EIA Organization: QCI-NABET Accredited
- Company: ISO 9001:2008 Certified



Our environmental laboratory services include sampling and monitoring & analysis of the following environmental media:

- ☒ Drinking water, packaged water, waste water & industrial effluent testing and analysis
- ☒ Microbial analysis for portability
- ☒ Ambient air quality monitoring, work place monitoring
- ☒ Stack or process emission monitoring, DG emission monitoring.
- ☒ Soil & sludge monitoring & analysis
- ☒ Municipal Solid Waste & Hazardous Waste monitoring & analysis
- ☒ Treatability & Feasibility - research & development Studies
- ☒ Noise and Vibration monitoring
- ☒ Meteorological data monitoring - wind speed, direction, temperature and relative humidity
- ☒ Baseline study for monitoring and analysis of various environmental media for impact assessment studies
- ☒ Efficiency assessment for air pollution control equipments
- ☒ Monitoring & analysis as per OSHA, ISO and Factory Act requirements
- ☒ Consultancy services for setting up environmental lab as per MoEF, NABL and OHSAS guidelines
- ☒ In-plant training for educational institutes, environmental professionals and company executives
- ☒ Development of Environmental Cell for Municipal Corporations

ULTRA-TECH - Environmental Consultancy & Laboratory

Laboratory : 93 A, G. V. Brothers Building No. 2, Bata Compound, Eastern Express Highway, Near Flower Valley, Khopat, Thane West - 400 601
Tel : 25474907, 022-25476217 E-Mail : lab@ultratech.in

Head Office : 206, 224-225, Jai Commercial Complex, Eastern Express Highway, Opp. Cadbury, Khopat, Thane West - 400 601
Tel: +91-22-25342776, 25380198 Fax: +91-22-25429650 e-mail: sales@ultratech.in
Visit Us At: www.ultratech.in Business Development : 09323544144

PUNE : pune@ultratech.in
Tel. No. : +91-20-2538 01 93 / 94

BANGALORE : bangalore@ultratech.in
Tel. No. : +080-23333115

KOCHI : kochi@ultratech.in
Tel. No. : +91-484 -2114252

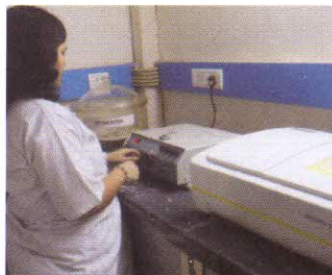
KOLKATA : kolkata@ultratech.in
Tel. No. : +033-40089145

SINGAPORE : singapore@ultratech.in
Tel. No. : +65 - 67548189

DELHI : delhi@ultratech.in

Our Key Clients

- ☒ Ambrosia, Borivali
- ☒ Beachwood Residency, Juhu
- ☒ Bihar Sakhar Karkhana
- ☒ Calvin Properties, Bandra
- ☒ Casa Royale, Thane
- ☒ Century Textiles, Worli
- ☒ Club Aquaria, Borivali
- ☒ Colaba Pumping Station
- ☒ Everest Countryside, Thane
- ☒ Everest Milestone, Wadala
- ☒ Hi Tech Carbon, Khalapur
- ☒ Hindalco, Talaja
- ☒ Hiranandani Gardens, Panvel
- ☒ Hotel Gulraj, Mahape
- ☒ Hyde Park, Kharghar
- ☒ Indiabulls Finance Centre
- ☒ Indiabulls Greens, Panvel
- ☒ Islam Mill, Currey Road
- ☒ IT-ITES, Goregaon
- ☒ J. K. House, Worli
- ☒ Johnson & Johnson Ltd. (Higi House)
- ☒ Kalpataru Riverside, Panvel
- ☒ Kalpataru Synergy II, Santacruz
- ☒ Kohinoor City, Kurla
- ☒ Kohinoor Square, Dadar
- ☒ Kukadi Sahakari Sakhar Karkhana Ltd., Ahmednagar
- ☒ Lady Ratan, Lower Parel
- ☒ Marathon Era, Lower Parel
- ☒ Marathon Futurex, Lower Parel
- ☒ Marathon Max, Mulund
- ☒ Mazalgaon Sahakari Sakhar Karkhana Ltd., Beed
- ☒ Metro Mall, Kalyan
- ☒ MHADA Redevelopment
- ☒ MIG II CHS, Bandra
- ☒ Nathani Heights, Mumbai Central
- ☒ Peninsula Techno Park, Kurla
- ☒ Praxair Limited, Murbad
- ☒ Praxair Limited, Murud
- ☒ Praxair Limited, Rabale
- ☒ Prestige Residency, Thane
- ☒ Puranik City, Thane
- ☒ Rajasthan State Ganaganagar sugar Mills, Rajasthan
- ☒ Rameshwaram, Dadar
- ☒ Redevelopment Project, Bhuleshwar
- ☒ Regency Ispat Pvt. Ltd., Wada
- ☒ Rehab SRA Project, Kandivli
- ☒ Rehabilitation Project, Malabar Hill
- ☒ Reliance Energy, Santacruz
- ☒ Residential Hotel, IT-ITES and Commercial Complex
- ☒ Runwal Orchid
- ☒ Rustamji, Majiwada
- ☒ Sahara Plaza Complex, Andheri
- ☒ Saint Gobain (Bhosari)
- ☒ Saint Gobain (Chakan)
- ☒ SEZ IT-ITES, Goregaon
- ☒ Shiv Koliwada Development, Sion
- ☒ Shri Ganesha Ekta SRA CHS, Goregaon
- ☒ Skylark Heights, Worli
- ☒ Tanaji And Kranti SRA CHS, Goregaon
- ☒ Tasgaonkar Sugar Mill Ltd., Phaltan, Satara
- ☒ The Address, Ghatkopar
- ☒ The DLF Luxury, Parel
- ☒ Ultratech Cement, Uran
- ☒ Wipro Infotech, Pune
- ☒ Jawaharlal Nehru Port Trust
- ☒ Lara-Anthony
- ☒ Hutti Hold Mines



- Established In 1986
- EIA Organization: QCI-NABET Accredited
- Laboratory: MoEF Recognised, OHSAS 18001:2007 Certified, NABL Certified
- Company: ISO 9001:2008 Certified

Environmental Impact Assessment & Consultancy Services

ULTRA-TECH Environmental Consultancy and Laboratory [Lab recognized by MoEF Govt. of India] is committed for providing environmental services since its inception in 1986.

ULTRA-TECH, a confluence of environmental experts, engineers, geologists, ecologists, hydrologists, environmental monitoring analytical & professionals and management experts; offers environmental consultancy services for obtaining prior Environmental Clearances as per EIA Notification 2006 (amended from time to time) from MoEF, State Level Environment Impact Assessment Authority [SEIAA], High Rise Committees [HRC, MCGM] etc. for QCI-NABET accredited project sectors.

ULTRA-TECH is in the process of enhancing its capability to serve more project sectors via horizontal expansion in India.



NABET Accredited Sectors

Mining Sector-1	Metallurgical industries-8	Isolated storage-28
Offshore & onshore oil & gas exploration-2	Cement plants-9	Ports & harbours-33
River Vally-3	Synthetic organic chemicals-21	Highways-34
Thermal Power Plants-4	Distilleries-22	Building construction-38
Mineral beneficiation-7	Sugar industry-25	Township and Area development-39
	Oil & gas pipeline-27	

Environmental Due Diligence / Audit Services

ULTRA-TECH's Environmental Expert Team offer services for Environmental Due Diligence for Industrial, Housing, Land use, etc. We have provided environmental due diligence services to Business Houses like Kalpataru, John Deere, Sheth Developers, etc.

Environmental Laboratory Services

Our Environmental Laboratory is - recognized by MoEF, Government of India and OHSAS 18001:2007 certified. It provides world class Laboratory Services to the clients.

Our well equipped research and analytical laboratory is based in Thane plays a vital role in environmental monitoring & analyses of various environmental attributes like air, water, soil, wastewater, noise, stack, flora/fauna including Marine (Phyto and Zooplanktons, Benthic Micro and Macro invertebrates, Fish), microbiological , etc.

Consultancy & Turn Key Project Services

ULTRA-TECH is leader in providing project and consultancy services on turnkey basis and is well known for quality, cost-effectiveness and well scheduled services: Ultra-Tech has developed its niche in prime regional markets & at present, enjoying its position through attaining optimum customer satisfaction.

We have designed and commissioned Wastewater/Sewage Treatment plants for many industrial, commercial, infrastructures, construction, corporate sectors.

ULTRA-TECH - Environmental Consultancy & Laboratory

Head Office : 206, 224-225, Jai Commercial Complex, Eastern Express Highway, Opp. Cadbury, Khopat, Thane West - 400 601
Tel. : +91-22-25342776, 25380198 Fax: +91-22-25429650 e-mail: sales@ultratech.in
Visit Us At: www.ultratech.in Business Development : 09323544144

PUNE : pune@ultratech.in
Tel. No. : +91-20-2538 01 93 / 94

BANGALORE : bangalore@ultratech.in
Tel. No. : +080-2333115

KOCHI : kochi@ultratech.in
Tel. No. : +91-484 -2114252

KOLKATA : kolkata@ultratech.in
Tel. No. : +033-40089145

SINGAPORE : singapore@ultratech.in
Tel. No. : +65 - 67548189

DELHI : delhi@ultratech.in

Construction Sector

M/s. Saifee Burhani Upliftment Trust Total Construction Built-up Area: 707275.67 sq. mt.	Redevelopment project by M/s. SaifeeBurhaniUpliftment Trustof MHADA under DCR 33 (9)at Bhendi Bazar
M/s. Nish Developers Total Construction Built-up Area: 297654.39 sq. mt.	Redevelopment project by M/s. Nish Developers of MHADA under DCR 33 (9) at New Islam mill Compound, Mumbai
Redevelopment of BDD chawls, at Naigaon&N.M.JoshiMarg by MHADA	
M/s. Maharashtra Film stage & Cultural Development Corporation (MFSCDC)	Redevelopment project of Film City (500 Acres) at Goregaon
M/s. S. D. Corporation Pvt. Ltd.	Redevelopment projectof MHADA under DCR 33(5) at Samtanagar
M/s. Kohinoor Planet Constructions Pvt. Ltd	Redevelopment ProjectofMHADA under DCR 33(9) at Fishermen Colony, Mahim
M/s. Rubberwala Developers	Redevelopment Projects of MHADA under DCR 33(7) at South Mumbai
M/s. Rohan Life Spaces	Redevelopment Projects of MHADA under DCR 33(7) at South Mumbai
M/s. Wadhwa Group	Redevelopment Project of MHADA under DCR 33(5) at PahadiGoregaon
M/s. Dumir Investment Pvt. Ltd.	Redevelopment Project of MHADA under DCR 33(7) at MadhavBhavan, Lower Parel
M/s. Nathani Parekh Construction Pvt. Ltd.	Redevelopment Project of MHADA under DCR 33(7) at Bombay Central
M/s. S. D. Corporation Pvt. Ltd.	SRA Project under DCR 33(10) at Tardeo
M/s. Sterling Buildcon Pvt. Ltd	SRA project under section 3K (1) Maharashtra slum area (Improvement, Clearance & Redevelopment) Act 1971at Chembur
M/S. Zodiac Developers Pvt. Ltd. and Samir Bhojwani	SRA Project under DCR 33(10)at Andheri
M/s. Ruchipriya Developers	SRA project under section 3K (1) Maharashtra slum area (Improvement, Clearance & Redevelopment) Act 1971 at Kandivli
M/s. Spenta Housing Corporation	SRA Project under DCR 33(10)at Chembur
M/s. LokhandwalaKataria Construction Pvt. Ltd.	SRA Project under DCR 33(10)at Mahalaxmi
M/s. Aryamaan Developers Pvt. Ltd.	SRA Project under DCR 33(10) at Kamraj Nagar, Ghatkopar Mumbai
TEXTILE MILL LAND REDEVELOPMENT	
Indiabulls Group	Redevelopment Projects at Elphiston and Jupiter Mill, Lower Parel
M/s. Kohinoor Group	Redevelopment at Kohinoor Mills , Dadar (W)
M/s. R A Associates	Redevelopment project at Kohinoor Mills , Dadar (E)
Century Mill Land Developes	Redevelopment project at Century Mill
Marathon Group	Redevelopment at
DLF Group	Redevelopment at Mumbai Mills, Lower Parel
TOWNSHIP PROJECTS/MIXED USE DEVELOPMENT/ CONVENTION AND EXHIBITION CENTRE	
M/s. Hiranandani Meadows	Manpada Thane
M/s. Hiranadani Estates	Kavesar, Thane
M/s. Marathon Group (M/s Matrix Enclave Projects Development Pvt. Ltd.)	Dombivali
M/s. Puranik Builders	Neral
M/s. Runwal Group (M/s. Horizon Projects Pvt. Ltd.)	Usarghar & Sandap
M/s. Raheja	
M/s. Claridges SEZ Developers Pvt. Ltd.	Sarang
M/s. Kavya Buildcon	Umbharkhand
M/s. DSK	Pune
M/s. AmrutRunwal Multi Housing PVT LTD.	Pune
M/s. Nirmal group	Thane & Pune
M/s. Reliance Industries Ltd	Convention and Exhibition Centre And Commercial Complex
HCC India Group (M/s. HRL (Thane) Real Estate Limited)	Village Kavesar, Thane
M/s. Kohinoor Group (M/s. Kohinoor Planet Constructions Pvt. Ltd.)	Kurla
RENTAL HOUSING by MMRDA	
M/s. TATA Housing Development Co. Ltd.	Village Ranjnoli, Bhiwandi
M/s. Indiabulls group (M/s. Diana Infrastructure Ltd.)	Panvel
M/s. Indiabulls group (M/s.Lucina Land Development Ltd.)	Panvel

Construction Sector

M/s. Adhiraj	Panvel
M/s. Marathon Group (M/s. Sanvo Resorts Pvt.Ltd)	Panvel
M/s. Vinay S Agarwal Developers	Panvel
M/s. Saket Developers	Panvel
5 STAR HOTEL PROJECTS	
M/s. Atul Resorts & Hospitality India Pvt. Ltd.	Andheri
M/s. IBIS group (M/s. Isha Steel Treatment Pvt. Ltd.)	Vikhroli
M/s/ Tip Top Group (M/s. Western India Inns and Resorts Limited)	Lonavala
M/s. Iora Hotels Pvt. Ltd.	Andheri
M/s. Jagur Buildcon Private Ltd.	Lower Parel
M/s. Meringue Hotels Private Limited	Andheri
M/s. Citras Hotels Pvt. Ltd.	Sangamwadi, Pune
M/s. Kanakia Group (M/s. Supreme Real Estate Developers Pvt. Ltd.)	Lucknow
IT PARKS	
M/s. Serene Properties Pvt .Ltd.	Airoli
M/s. Reliable Export	Airoli
M/s. Reliance Energy Ltd	Santacruz
HOSPITAL PROJECTS	
M/s. Verma Medicine Research Trust.	Parel
M/s. Bharati Vidyapeeth	Pune
M/s. Kohinoor planet constructions pvt. Ltd.	Kurla
EDUCATIONAL INSTITUTES/HOSTELS/ MEDICAL COLLEGES	
Symbiosis Institute , Pune	2 projects in Pune
M/s. Tata Institute Of Social Sciences	T.I.S.S. Nauroji Campus
M/s. Tata Institute Of Social Sciences	T.I.S.S. Main Campus
M/s. Kanakia Group (M/s. RBK Global School - BabubhaiKanakia Foundation)	School project at Mira Road
M/s. Indiabulls Real Estate Pvt.Ltd	Central Library Building at Kallina

Please Note: This list is indicative and does not contain all the projects with Ultra –Tech. We have provided our Consultancy Services all over India for obtaining Environmental Clearances for more than 800 projects for Construction sector, Infrastructure development and Industrial sector.

CRZ CLEARANCE

1. Pan India Paryatan Pvt. Ltd.- CRZ Clearance for Bird and Adventure park	7. M/s. One up Developers
2. MIDC – Pipeline project	8. SWM Department, M.C.G.M. Mumbai
3. Nival Developers(Piramal Group) - Redevelopment project	9. Acruti City Limited & E Commerce Magnum Solution Pvt. Ltd
4. Goodwill Properties Pvt. Ltd	10. Hoary Realty Limited.
5. Reliance Industries Ltd.	11. Nimesh Global syndicate(Ace Link)
6. SanthanShridevGanapatipule	

HIGH – RISE CLEARANCES

Piramal Group	Nathani Parekh Constructions Pvt. Ltd.
Dosti Realty Ltd.	Darshan Group
B.G. Shirke Group	Indiabulls real estate co. Pvt. Ltd.
Kohinoor CTNL	Park View
Wadhwa Group	Rubberwala Housing & Infrastructure LTD
Kalpavruksha Developers	Jawala Real Estate Ltd.
Kamala Mills Limited	Century Textiles & Industries LTD
R.A. Associates	Atithi Builders And Constructors Private Limited
Bau Developers	Rohan Group
Bombay dyeing	Nish Developer
ND Developers	

*Together we can make earth a
greener place*



Environmental Consultancy & Laboratory

Laboratory recognized by
Ministry of Environment and Forests (MoEF),
Govt. of India

Head Office : 206, 224-225,
Jai Commercial Complex,
Eastern Express Highway, Opp. Cadbury,
Khopat, Thane West - 400 610
TEL: +91-22-25342776, 25380198
FAX: +91-22-25429650
E-mail : sales@ultratech.in
VISIT US AT: www.ultratech.in
BUSINESS DEV: 09323544144

Laboratory : 93 A, G. V. Brothers Building No. 2,
Bata Compound, Eastern Express Highway,
Near Flower Valley, Khopat, Thane West - 400 601
E-mail : lab@ultratech.in
Tel : 25474907, 022-25476217

PUNE OFFICE

Unit no. 201-204, Building C-3
Saudamini Commercial Complex,
Paud Road, Kothrud,
Pune - 411038.
Tel. No. : +91-20-25286106
E-mail : pune@ultratech.in

KOCHI OFFICE

27 / 2957 A1, First Floor,
Vaniampilly, K P Vallon Road,
Kadavanthra, Kochi - 682020.
Tel. No. : +91(0) - 484 - 4011173
E-mail : kochi@ultratech.in

SINGAPORE OFFICE

Ultra-Tech Bio-cons Pvt. Ltd. No. 10,
Jalan Beasar Road, # 11-05, Singapore - 208787.
Tel. No. : +91-22-2547 4907
Tel. No. : +65 - 67548189
E-mail : singapore@ultratech.in

DELHI BRANCH:

Flat No. 6E, 6th Floor, Gopala Towers,
Rajendra Palace, New Delhi - 110008.
E-mail: delhi@ultratech.in

BANGALORE BRANCH:

No.393, Judges Colony, Matadahalli Layout,
R. T. Nagar, Bangalore - 560032.
Tel. No. : +080-23333115
Mobile : 7829333115
E-mail : Bangalore@ultratech.in

KOLKATA BRANCH:

CG - 229, Sector II, Salt Lake
Kolkata (West Bengal) - 700 091.
Tel. No. : +033-40089145
Mobile : +91 9674 488 198
E-mail : kolkata@ultratech.in



Environmental Consultancy & Laboratory

Laboratory Approved & Gazetted by
Ministry of Environment and Forests (MoEF),
Govt. of India, OHSAS Certified
NABL Certified

E/A organization Accredited by NABET
ISO 9001:2008 Certified

